



TOWN OF CLARKDALE - A 2012 CENTENNIAL TOWN

"SMALL TALK"

OF THE TOWN



NOVEMBER
2016

HALLOWEEN

Monday, October 31st

TRICK-OR-TREATING

5pm-7 pm

COSTUME CONTEST

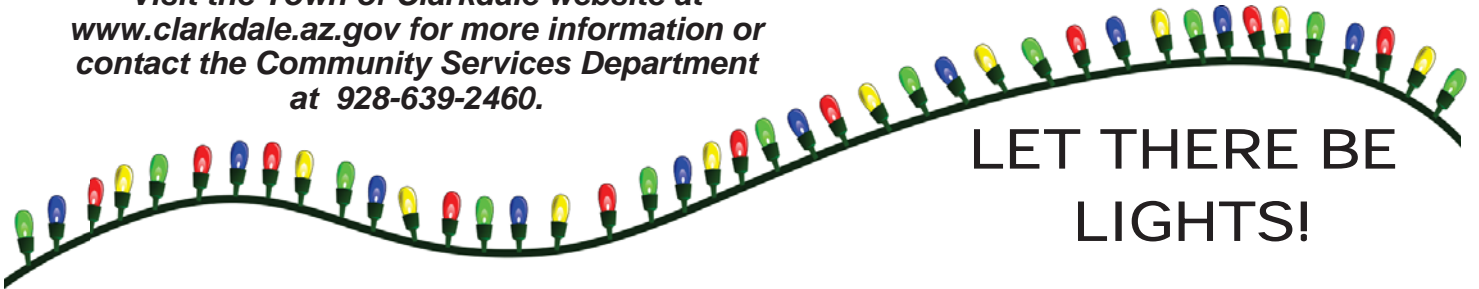
5:30 pm
in the Town Park



Upper Clarkdale Residents Halloween Road Closures

The Town will block vehicular traffic in upper Clarkdale on Main, First South and First North streets from 4:30-7:15 on October 31st. There will be **NO VEHICLE ACCESS** on all three streets during this time. We recognize this places a major inconvenience on upper Clarkdale residents, thank you for your cooperation and understanding.

Visit the Town of Clarkdale website at www.clarkdale.az.gov for more information or contact the Community Services Department at 928-639-2460.



LET THERE BE LIGHTS!

Clarkdale's holiday light display is one of the area's most anticipated winter traditions. Each year the Town of Clarkdale has been fortunate to offer holiday lighting throughout the downtown area, including the Town Park Gazebo, Main Street and the Town Hall complex. The holiday lights are on display from the end of November through the first of the New Year and are enjoyed by residents, visitors and our friends from around the Verde Valley.

The Town of Clarkdale is proud to carry on this tradition and would appreciate your help to keep the lights twinkling! Please drop off your donations of solid colored mini lights (red, green, clear) to the Clark Memorial Library or the Library book drop outside of the building. If you have questions contact the Community Services Department at 639-2460 or email community.services@clarkdale.az.gov.

HOLIDAY CLOSURES

Town of Clarkdale
offices and Library will
be closed the following
dates:



November 11th
Veteran's Day

November
24th & 25th
Thanksgiving



SATURDAY

10.29.2016

10AM - 1PM

HOWL-O-WEEN
CLARKDALE ARIZONA - SPOOKTACULAR AT THE PARK
PET FESTIVAL AND COSTUME CONTEST
PROFITS TO BENEFIT ANIMAL RESCUE AND ADOPTION

PRESENTED BY:
CLARKDALE DOWNTOWN BUSINESS
ALLIANCE



- ✦ Costume contest
- ✦ Best of show prizes
- ✦ Trick for treat with your dog
- ✦ Games
- ✦ 50/50 raffle
- ✦ Vendors with food samples
- ✦ Yappy hour
- ✦ DEMOS

PLEASE NOTE ALL DOGS MUST BE ON NON-FLEX LEASH WITH CURRENT RABIES VACCINATIONS

BITTER CREEK INDUSTRIAL FOCUS AREA PLAN

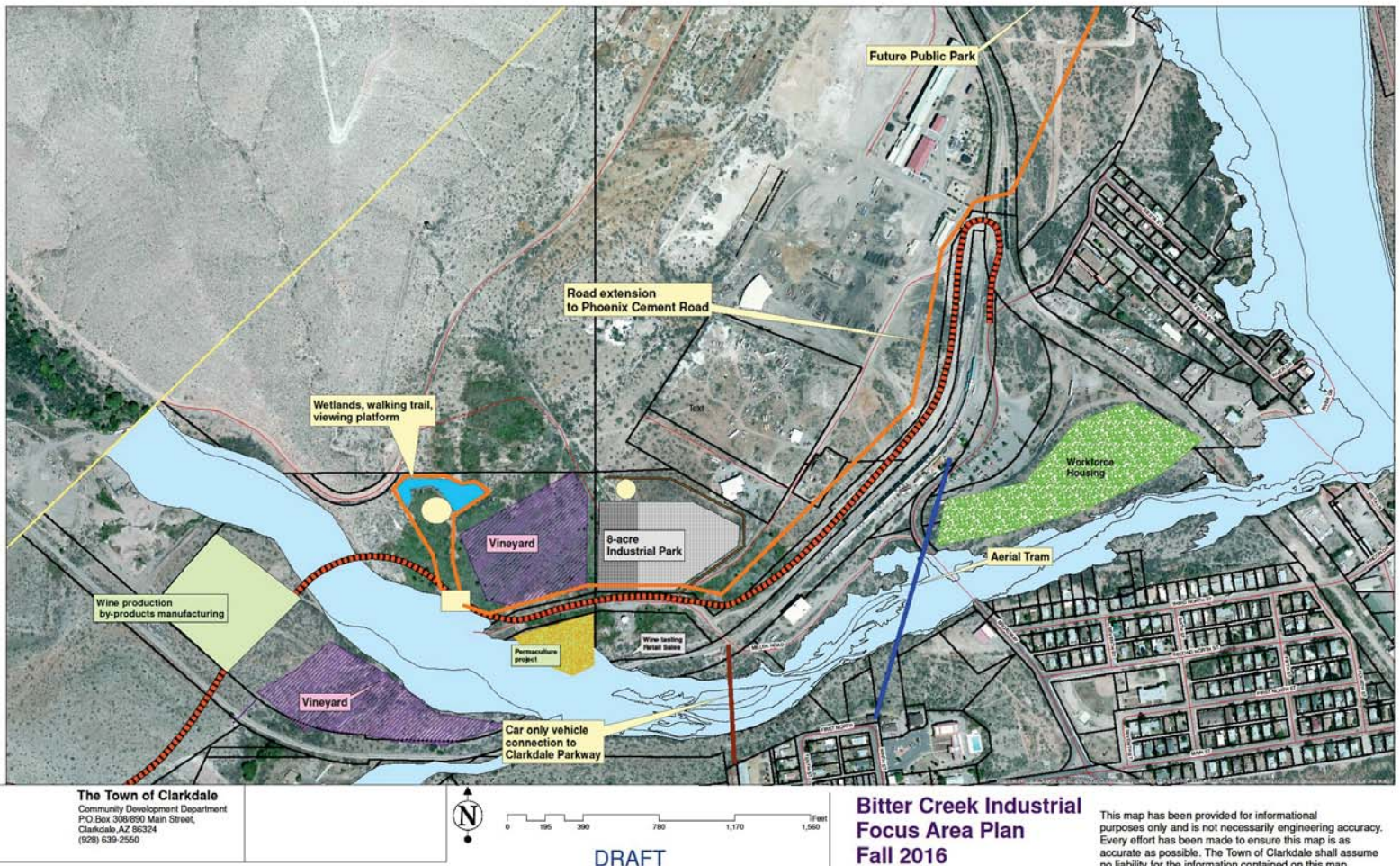
Clarkdale Town Council will begin reviewing the draft development plan for the Bitter Creek Industrial Area in November. This area, where the original Clarkdale smelter was located, contains 405 acres of industrially zoned property. A few businesses are located within this area, but the majority of land is undeveloped or underutilized.

The objective of the plan is to encourage a variety of innovative economic expansion opportunities and partnerships focusing on sustainable industrial development. The plan provides a guideline for development in this area over the next 10 to 20 years.

Concepts being incorporated into the plan include a multi-modal road extension through the area, the potential for development of vineyards and a winetasting room, an industrial park, and a wetlands area with walking trails and viewing platform. A location for employee housing for current and future employers in the area is also identified.

This is the second in a series of four focus area plans to be developed for important economic areas of the Town.

The public, especially nearby residents and property owners, are encouraged to submit comments to the Community Development Department regarding the plan. Contact Beth Escobar in the Community & Economic Development Department at (928) 639-2500 or beth.escobar@clarkdale.az.gov with questions or comments.



CLARKDALE EVENTS

or visit www.clarkdale.az.gov for the Community Calendar